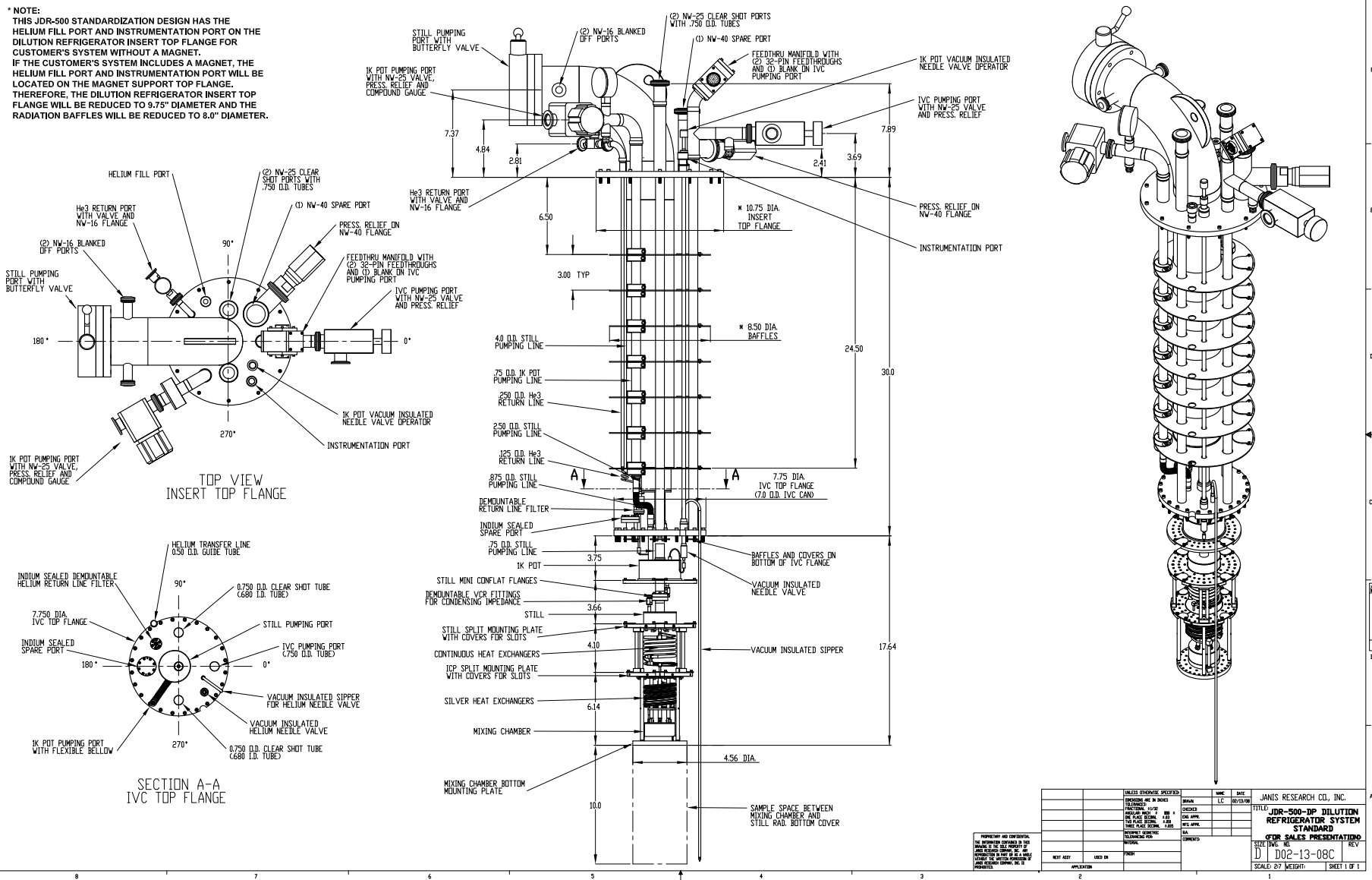


\* NOTE:  
 THIS JDR-500 STANDARDIZATION DESIGN HAS THE HELIUM FILL PORT AND INSTRUMENTATION PORT ON THE DILUTION REFRIGERATOR INSERT TOP FLANGE FOR CUSTOMER'S SYSTEM WITHOUT A MAGNET. IF THE CUSTOMER'S SYSTEM INCLUDES A MAGNET, THE HELIUM FILL PORT AND INSTRUMENTATION PORT WILL BE LOCATED ON THE MAGNET SUPPORT TOP FLANGE. THEREFORE, THE DILUTION REFRIGERATOR INSERT TOP FLANGE WILL BE REDUCED TO 9.75" DIAMETER AND THE RADIATION BAFFLES WILL BE REDUCED TO 8.0" DIAMETER.



UNLESS OTHERWISE SPECIFIED		DATE	JANIS RESEARCH CO., INC.
FINISHES ARE IN INCHES	DRWN	LC	REV/DATE
TOLERANCES	DESIGN		
FRACTIONS	AS SHOWN		
DIMENSIONS UNLESS NOTED OTHERWISE	AS SHOWN		
PERFECTING AND CONFIDENTIAL	AS SHOWN		
ALL INFORMATION CONTAINED HEREIN IS UNCLASSIFIED EXCEPT WHERE SHOWN OTHERWISE	AS SHOWN		
DATE	APP'D	USED IN	KEY
REV	APPLICATION		

TITLE: JDR-500-DP DILUTION REFRIGERATOR SYSTEM STANDARD  
 FOR SALES PRESENTATION  
 SCALE: 2:1 WEIGHT  
 SHEET 1 OF 1